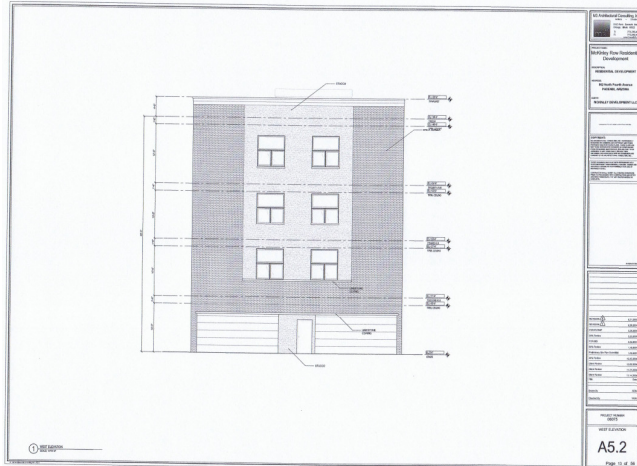


**802 North Fourth Avenue
Structural Engineering Design & Analysis
New 4-story Masonry Building**
802 North 4th Avenue
Phoenix, Arizona



Mueller & Associates, LLC (MA) in a joint effort with M3 Architectural in the design of this four-story residential building in Phoenix Arizona. The Lateral & Gravity forces are transferred to reinforced concrete masonry unit interior and exterior walls via the wood floor diaphragms. Soil conditions and seismic forces governed the structural engineering design.

M&A provided the following services:

- Structural Engineering Design, Modeling & Analysis of New Concrete Masonry Unit (CMU) Building Structure

